

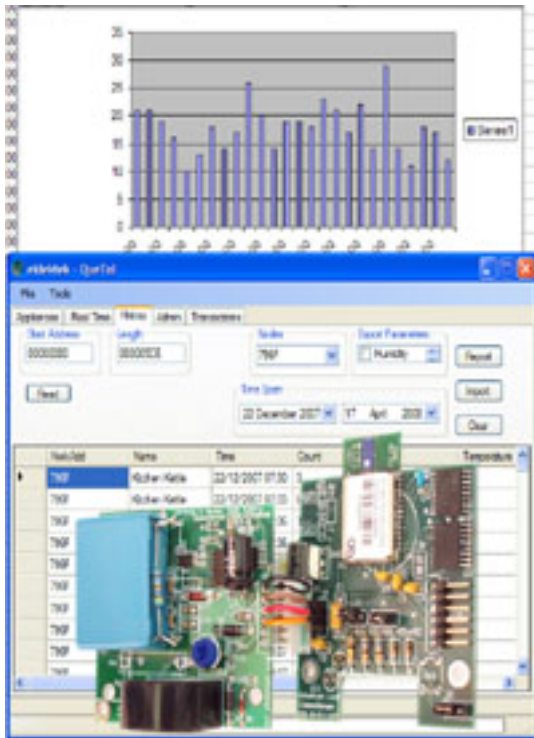
## 13A-CASP01: 13A - Communication And Sense Platform

A wireless network of 13 Amp plug adapter modules revealing insight into domestic and office environments. Local network storage and real time clock enables deploy and forget and/or real time monitoring of electrical appliance usage (ON/OFF), temperature, humidity and light level.

Featuring the latest low power wireless technology and supplied with a PC based administration tool enabling network setup, data archiving, visualisation/historic analysis, alert definition and maintenance. This product forms the basis of the next generation of human awareness tools to enable change.

### Applications

- Carbon Footprint management
- Behaviour change
- Green Auditing
- Standby detection
- Sheltered Accommodation Monitoring
- Appliance Energy Monitoring in conjunction with a smart meter.
- Market research
- Office/Domestic Environment Monitoring



### Features and benefits

- PC based administration and presentation of real time and historic data.
- Generation of Statistical reports.
- Gateway node with USB and RS232 interface.
- High build quality
- Modular architecture
- Mesh or Tree topologies
- Based on the versatile JN5139 Wireless Controller.
- 2 – 128 MB Flash – giving over 9.5million data points.
- Real – time clock
- Battery backed ram.
- Current Sensor – with software set threshold.
- Temperature and humidity sensor – Optional.
- Light sensor – Optional.
- Ultra – low power



**eiklektek Ltd.**

Cambridge, UK.

[www.eiklektek.com](http://www.eiklektek.com)

(c) 2008 eiklektek  
Ltd.